

WPP license no.MR/TECH/WPP-79/NORTH/2021-23 License to post without prepayment Postal Registration No. MCN/101/2021-2023
Published on 5th of every month Posting date: 9th & 10th of every months Posted at Patrika Channel Sorting Office, Mumbai-400001
Registered with Registrar of Newspapers under RNI No. MAHENG/2009/33411

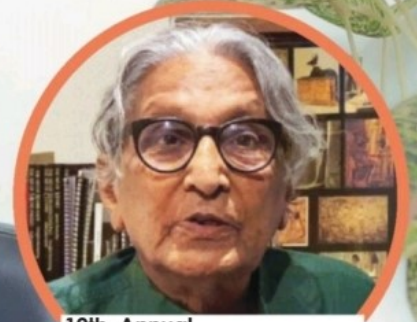
Total number of pages 52

ARCHITECT

and INTERIORS INDIA

Inspiration and ideas for architects and interior designers

Vol 13 | Issue 7 | October 2021 | ₹100



10th Annual
Gen | 2021
DESIGN FORUM

A glitterous event
with the stars of
the industry

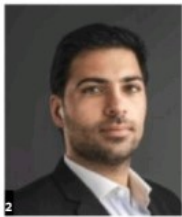
BREAKING THE MOULD

WITH ARCHITECT ARUN PRASAD

A young gun based out of Coimbatore, Arun is not only passionate about his work but also very meticulous and foresighted.



1



2

THE MIGHT OF LIGHT

LIGHTING IS AN INTEGRAL ASPECT OF DÉCOR THAT ELEVATES A SPACE BY ACCENTUATING ITS TEXTURES AND HIGHLIGHTING KEY ELEMENTS.

BY BINDU GOPAL RAO

1. Bold statement pieces are used as a design focal point accentuating a given space and corners courtesy MAIA Estates

2. Rishad Khergamwala, Director, Developments, MAIA Estates

Lighting is as fundamental as every unique detail of a given space. Great lighting installations change and transform a space; lights can make a room feel comfortable, welcoming, intense or sharp, while the shadows can accentuate the textures and draw attention to small but key spots.

SPOT ON

Lighting is perhaps one of the most pivotal design elements across all spaces. It helps in creating an inviting, cozy and productive environment. "Some types of lights that can be used to elevate your spaces include accent lighting that

add drama by creating a visual interest; ambient lighting that sets the mood of a space, task lighting that helps you perform specific tasks such as reading and working, and decorative lighting, like an interesting chandelier, in the double height space to add grandeur to your home," says Rishad Khergamwala, Director, Developments, MAIA Estates. Pritika Singh, Founder, MOHH adds, "Lighting in home décor is equivalent to a masterstroke; the right placement can create an impact, add dimension and depth, highlight the most stunning corners, and give a sense of warmth. A strategic choice of lighting can make any room a visual treat by adding a bit of drama with accent lighting or



from the bedroom to the staircases, and nooks and corners in a home, and one can choose from ambient-lighting or task-lighting for the same," he adds.

Mayur Panbude, Director, Valueco Innovations LLP, Pune adds, "Light, and the colour of the light, is an element without which no interior design / décor can be complete. Same as a bride without makeup. Lighting can elevate the ambience and perception along with the energy levels of the space."

GOING GREEN

As an element of décor that consumes energy, there is a lot of time and effort that is now going into making lighting sustainable. "We are the first lighting design company that makes banana fibre lights. We deal mainly in cork lighting, faux concrete lighting and paper lights," says Jenny Pinto, Designer, Oorjaa. Sustainability in lighting is the need of the hour. Not only does it help the planet to practice green lighting solutions, it is also economical and beneficial for users in the long run. "Endorsing energy efficiency and avoiding wasteful expenditure is a consciousness brought about by the advent and progression of the pandemic. Of all the options available today, LED's have proved time and again to be the

most economical and effective means of light," says Vinayak Diwan, Design Director, Lightbook, New Delhi/ London.

SUSTAINABILITY MATTERS

Materials such as optical fibre embedded concrete panels, concrete lights, solar lights, LEDs, biodegradable materials such as jute, fabric, bamboo, paper, wood, metal, and rattan are key when it comes to sustainable lights. Ruchi Mishra, Business Head Design & Interiors, New Modern Buildwell Private Limited, says, "While designing wall washers, dimmers, lamps, task lights are used to optimise and prioritise areas where required illumination is achieved. Placements of lights are also essential in optimising energy consumption." Basic design principles need to be followed to maximise the potential of a space and match its functionality. "Create coves at ceiling level to let the light reflect off the ceiling and even out the dissipation of light. It makes the space feel larger. An up light or an up-and-down light also helps with the even dissipation of light. Versatile LED strips that can be used for task lighting underneath cabinets to enhance the mirror are also great," says Shibane Sagar, Principal Shibane + Kamal Design.



DÉCOR MANTRA

The true flavour of any design or space comes alive only with the right focus of light that creates the required drama, transforming it into a seamless combination of functionality and style. "The essence of light, in terms of its luminance, colour, sharpness, position, and focal point are the key features that govern the design aesthetics of any place and the intended mood, which is very critical. Just as the application of daylight is very crucial in designing a space from an architectural perspective, similarly the application of artificial lighting is equally critical when it comes to interior design and decor of that space," says Giulia Baima Bollone, Business Head, Embassy Interiors Pvt. Ltd. Vishal Kaul, Vice President, Lighting, Crompton Greaves Consumer Electricals Ltd., adds, "Lighting helps to add another dimension to your décor and transform your space. Great lighting gives a choice to modify

11. Jenny Pinto, Designer, Oorjaa

12. Vinayak Diwan, Design Director, Lightbook

13. Ruchi Mishra, Business Head Design & Interiors, New Modern Buildwell

14. Oorjaa makes lights from scratch and all the lights are handmade, making each of them unique

15. Todd Residence at Gurgaon has lights from Lightbook

